

---

"Viking Pink Frost Decorated Special Group - 1982"  
by Preston Ver Meer



**Pink Frost Decorated Collection added in in 1982!**

The 1982 Viking Catalog Supplement showed this two page spread on pages 12 & 13. This is the only catalog I have for 1983 so we will go with the 1982 Supplement for possible 1983 items. There were 13 items shown with the Bird extra. Some items ie. (patio lite) were from popular molds used earlier.

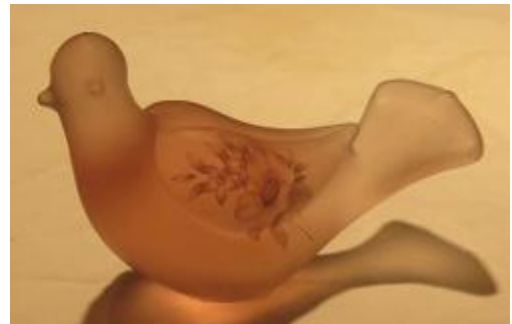
In the Catalog introductory Viking said.

"The new crystal and pink frost collections with delicate floral decorations are beautiful to be hold and early market reaction has been very successful."

**This footless frosted decorated bird #D2417 not shown.**

This bird was shown earlier in the catalog in crystal frost but must have flown the coupe before the two page spread with the other 13 was printed.

The bird did show up in the 1984 Catalog. That is the last catalog Viking put out.



**New Style Glimmer #D2413 added in the Pink Frost Decorated line!**

I have not seen this style "Glimmer" shown in any previous Catalogs. Listed as #D2413 4.5 inch Glimmer in the 1982 catalog.

Small but scarce piece like many of the others!

Measuring 4 inches tall 5.5 wide with 5 petals



**Hankerchief Vase #2403 is what Viking called this 6.5 inch vase!**

Another hard to find item is the, what I always called a "Compote", hankerchief vase.

---

It was also shown in the 1984 catalog. It is the 6-Petal pattern mold used for years by Viking!

No set is complete without this late addition!



**Old "Patio Lite" mold #7018 from back in the 70'S still in style!  
Now #D2414.**

This old mold was used to make over 20 different colors and style of this flowerlite.

I think it is quite unique that Viking would bring this mold out as one of the last items they made.

AGAIN! No Patio Lite collection is complete with out this late comer!



**Viking is now calling this large version of the Glimmer a 7 Inch bowl #D2408!**

The bowl (or large Glimmer) measures 7 inches wide by 6.5 inches tall with 2.75 inch hexagon base.

My poor lighting does not show the beauty of the pink frost and flower contrast in colors. This is a neat and colorful set.



**Large Center Piece Bowl #2409 added to the line!**

Viking must have just added this plain bowl to its inventory or brought it back from the basement because I don't recall ever seeing it before.

It make for a beautiful Center Piece Bowl on a table, dresser, or where ever you put it, it will take center stage glory!

The Catalog describes it as 10 inch bowl BUT it is - 11.75 inches wide by 6 inches tall on a 3 inch base.



**New designed Candy Dish #2410 lid on Old #1007 Flowerlite Mold!**

I have not seen this scarce candy dish before. The old #1007 flowerlite mold was brought out with this new lid design and made in new color pink frost.

In the real old days they called these Powder Jars!

Measuring 5 Inches wide on 3 padded feet. The flowerlites are highly collected in many colors. This is a scarce Covered Candy that is highly collectable in its own right.



**Plain Bell #D2412 designed for Frost Pink Satin Decorated Bell!**

This plain bell must have been designed just for this Decorated Series. It is also used plain and with other flower decoration in crystal.

I have dozens of designs with Viking Bells made for years BUT! This one only showed up just before closing of the factory and only in this set.



**AGAIN! Plain Vase #D2404 must have been designed for this decorated series.**

I have collect Viking for 30 years and this type of vase really wasn't in the line. I have no idea where the mold come from but the plain surface allowed it to be frosted and painted.

This vase #D2404 6 inches tall with a 3.75 inch base

Viking shows this vase in Pink and Crystal Frost decorated and undecorated only in the last catalogs.



**This 7 inch Grecian Vase #D2405 decorated with this flower!**

The first showing of this vase was in the 1982 Catalog in plain pink

---

frost #8282. The 1982 Supplement shows it in colors Ginger Frost, Blu and Crystal frost.

Shown in Lilac Frost in the 1984 Catalog.



**This 10 inch Bud Vase #D2401 is from the original #1140 back in the 60's!**

**Also shown in the series was the 6 Petal Vase in the small 12 inch size. I don't have a separate photo of it.**

All of the Viking Swung Vases are becoming quite collectable even in the short sizes and scarce colors like this one.

Height varies up to 12 Inches but all have the 1.75 Inch Collar Base.



---

**AGAIN! Another Candy Dish #D2411 mold and lid not seen earlier by me in Viking Patterns!**

This 8 Inch Footed Covered Candy, as Viking calls it, Stands actually 9 inches tall by 4 inches wide on a 3 inch base.

This is a beautiful piece not shown well with the colors of my photo.



©2007 VikingArtGlass.com